

Be sure to visit our club's website  
<http://tennesseets.weebly.com/>

# Tennessee T's



## Model T Ford Club

Editor: Bill Robinson



A message from **Gary Tillstrom**, our President:

Greetings T's

The New Year arrived as it does every year. I'm guessing we are far enough into it that we have all given up on the whole, "going to go to the gym thing". Some resolutions are just destined to fail. I'm hoping however that the resolve to have more T events hasn't escaped your thinking this year. The chapter needs everyone's help to be more active with touring. So far the only firmed up tour is the Natchez Trace in May leaving the rest of the touring season wide open. If you have a tour idea let me know and we'll see what can be developed of it.

Looking forward to seeing as many as possible in Millington later this month for our annual Lynn Cook day. We are covering different subjects this year than in previous years. If you have bad wood wheels, leaky radiator, or rusted out sheet metal you will want to be there. If you have none of these, you'll want to be there anyway! Come hungry, breakfast before we start.

I have not had anyone volunteer to do the Christmas Party this year. Unless someone wants to do it I will book the Natchez Trace State Park again.

According to the Ground Hog, spring will be here pretty quick. Make sure your car is safe and we'll see you down the road. Gary

- President's Page.....Pg 1
- Driving directions to Lynn Cook day.....Pg 2
- Timer experience.....Pg 3
- Tours and Events, For Sale, New members....Pg 4
- 100th day at school project.....Pg 5
- Door Strap Fix.....Pg 6
- Membership application.....Pg 10



**DON'T FORGET**  
**Lynn Cook day!**

**DETAILS <sup>R</sup> ON**  
**THE EVENTS PAGE**

### Officers of the Tennessee T's:

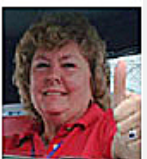
President- Gary Tillstrom  
Millington, TN 901-496-5527  
email: [gtillstrom@aol.com](mailto:gtillstrom@aol.com)



Vice President- Ralph Williams  
Nesbit, MS 662-342-9140  
email:  
[Rwilliams@gateslumber.com](mailto:Rwilliams@gateslumber.com)



Secretary Treasurer- Anita Owen  
Elizabethtown, KY 270-763-6577  
email: [alowen@kymodelt.com](mailto:alowen@kymodelt.com)



Chaplain- Mac Flowers  
New Johnsonville, TN  
931-535-2327



**Membership Application see page 6**

## Driving directions to Lynn Cook day

If coming from I-40, take the TN-385 exit. Can't miss it, big sign for Millington. As you near Millington you will want to exit at Church Street or Raleigh Millington road (they keep changing the sign) At the bottom of the exit ramp go right. The second light you come to will be Navy Road. Turn right. Going east on Navy Road you will see a foot bridge across the road at the second light. Turn left at this light onto Hornet Ave. You will see a sign for the Navy Flying Club less than a ½ mile. Turn right at that sign. Building N-110 is the last building on the left.

If the Navy Reserve has drill on that weekend they will block of the road about a block or two in front of Eniwetok Street. If this happens, turn right where they have it blocked off and at the 1st stop sign turn left. That street will take you to the flying club.

**From Memphis via US-51**, coming into Millington turn right on Navy road. Turn left at the fifth light into the airport on Hornet Ave. This will be the light with the foot bridge across the road. You will see a sign for the Navy Flying Club less than a ½ mile. Turn right at that sign. Building N-110 is the last building on the left.

If the Navy Reserve has drill on that weekend they will block of the road about a block or two in front of Eniwetok Street. If this happens, turn right where they have it blocked off and at the 1st stop sign turn left. That street will take you to the flying club.

**From Holiday Inn Express**, You will take Veterans Parkway which brings you past the backside of the airport. The hotel has two driveways, one puts you on US-51 and the other puts you on West Union, traffic will be easier on West Union. Once West Union crosses hwy 51 it becomes Veterans Parkway. At Navy Road, turn left headed east. Going east on Navy Road you will see a foot bridge across the road at the second light. Turn left at this light onto Hornet Ave. You will see a sign for the Navy Flying Club less than a ½ mile. Turn right at that sign. Building N-110 is the last building on the left.

If the Navy Reserve has drill on that weekend they will block of the road about a block or two in front of Eniwetok Street. If this happens, turn right where they have it blocked off and at the 1st stop sign turn left. That street will take you to the flying club.

**For those coming from out of town needing a hotel, Millington Holiday Inn Express  
5090 Copper Creek Blvd 901-872-3640 Group name "Tennessee T's"**

There are plenty of places to eat as well nearby.

*This repair will not be discussed at our meeting! Lynn would have frowned on this fix.*



## TW Timer Experience by John Zibell

At the last engine rebuild of my 1926 T I had heard good things about the TW timer so I thought I'd give it a try. After a friend diagnosed carbon built up in his timer I thought I had better check mine. He had probably a bit over 2,000 miles on his, I had maybe 1,000 to 1,500 max. I haven't had any running issues yet. His symptoms were backfiring and heavy missing while running on magneto. Figure 1 shows the results of my miles driving.

As you can see, there is considerable build up of carbon dust in the timer. Probably would not have been long before running issues.



Figure 1

Even more surprising was the amount of wear on the round type brush of the timer. The brush had worn down close to the retaining hole used when installing the brush. See figure 2.

You can make out the retaining hole on the brush and see where it would align when new for installation.

I will say the car ran well with this timer, but I am not pleased with the longevity of the brush nor the build up of carbon which would lead to mis-firing under magneto power as my friend experienced.

As a result of these observations I switched back to the Anderson style timer I had run before for many miles with no issues. Your experience with the timer may be different, but for me the frequency of service and the need for frequent brush replacement is not for me.

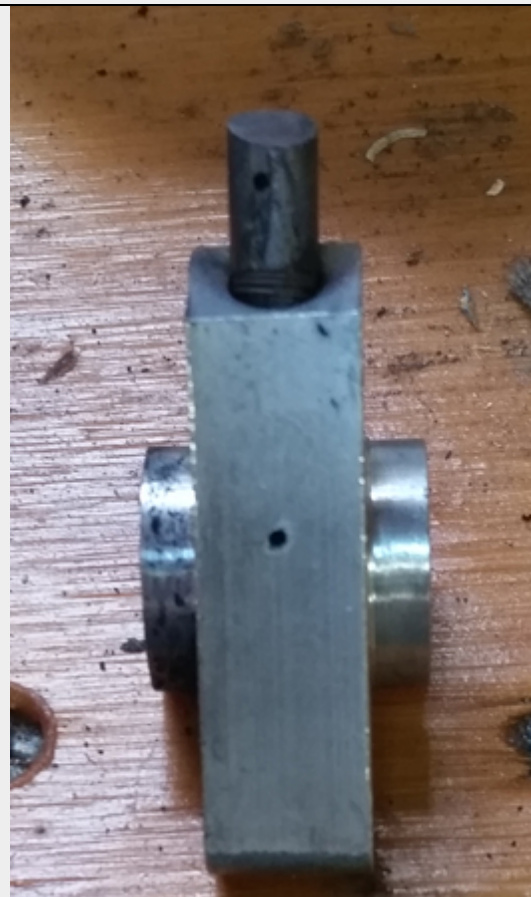


Figure 2

**Note from the Editor:**  
Special thanks to  
**John Zibell**  
for this submission

# Tours and Events

Contact Gary Tillstrom, our club President, if you have a tour planned to be sure the date is still open.  
[gtillstrom@aol.com](mailto:gtillstrom@aol.com)

Date	Event (Tennessee T's events are highlighted)
Feb 25th	Lynn Cook Safety Day Saturday Millington TN
Mar 17-18	Chickasha prewar swap meet. (Friday – Saturday)
May 12-21	Natchez Trace Tour (3 choices dates to attend.) Contact <a href="mailto:markpaulagember@aol.com">markpaulagember@aol.com</a>
April 6th	WWI event at Belle Meade Plantation- see details on this page
June 8-10	Show Me Tour, Bolivar, MO
June 13-17	Petit Jean Swap Meet
June 21-24	2017 International Speedsters Trials & Reunion, Lincoln, NE
July 16-21	Joint MTFCI/MTFCA club National "Motoring in Montana" Tour – Whitefish MT
Aug 31-Sep 3	2017 Ohio Jamboree- Berlin Ohio contact <a href="mailto:tomlinda@twc.com">tomlinda@twc.com</a>
Sept 6-10	Hillbilly Tour, Osage Beach MO
Oct 4-7	Hershey fall swap meet, Hershey PA
Dec 2nd	TN T's Christmas party- Natchez Trace State Park

## WWI event at Belle Meade Plantation

I am in the planning stages of a event on **April 6th** for the commemoration of America entering WWI. We hope to have an educational Training camp recreated on the property to tell the story of Camp Andrew Jackson that was once part of the landscape here in Belle Meade. I really want this to be a big event for us and Nashville because Cities across the state will be having Memorial/events for the start of the Centennial.

I would love to have era cars on the property and I would like to invite your group or anyone you know with WWI era items to participate!! I truly want to be more active in the community and this is the first community involved event we have had in a long time. I hope you will be able to be a part of that. If you have any ideas or other contacts I would greatly appreciate any help.

I eagerly await your response.

Jesse Williams [jesse.williams@bellemeadeplantation.com](mailto:jesse.williams@bellemeadeplantation.com)



A view from the Past- L to R- Ken Swan, Joyce Swan, Lynn Cook, Sue Cook Ernestine Flowers, Mac Flowers

# Lynn Cook day! Saturday Feb 25, 2017

Learn from the best: Ralph Williams, Keith Barrier, and Gary Tillstrom

- \* Re-spoking wood wheels
- \* Repairing body damage with oxy / acetylene welding methods
- \* Radiator work
- \* A/C brake mock up with linkage fabrication



*Tour the Trace*

*May 12-21, 2017*

**Full details are on our club's website.**  
**There is still time to sign up.**  
<http://tennesseets.weebly.com/natchez-trace-tour-2017.html>

# New Members



**Model T Ford Club**  
**New Members**

\* Hobart (George) and Ramona Akin  
 Louisville, TN

\*\*\*\*\*

**Planning a Model T tour? Contact Gary, our President, to see if the event date is open. If you don't plan a tour- then who will?**



The granddaughter of Ralph Williams had to draw a picture in her 100th day at school. So, look what her subject was? Use your ZOOM tool. Her text reads "Old Truck".

**THIS WAS IN ILLINOIS,  
SIX YEARS AGO**

*Flivver Driver:* "Do you know which road goes to Chicago?"

*Country Boy:* "No."

*Flivver Driver:* "Do you know which road goes to Joliet?"

*Country Boy:* "No."

*Flivver Driver:* "Do you know which road goes to Wheaton?"

*Country Boy:* "No."

*Flivver Driver:* "You don't know anything, do you?"

*Country Boy:* "Yes, Sir. I know I'm not lost."

*Joke credit given to Floyd Clymer  
Those Wonderful Old Automobiles*

**Today in  
history**

Today is Wednesday, Jan. 11, the 11th day of 2017.

**In 1913**, the first enclosed sedan-type automobile, a Hudson, went on display at the 13th National Automobile Show in New York.

Thanks to Ken Jack for the submission

**FULL-TIME STUDENTS JOIN DUES-FREE**

**Important notice, in case you missed it** in Anita's minutes of our latest business meeting. Gary made a motion that any full-time college student with an interest in Model Ts can join the Tennessee T's and their membership fees will be waived. The motion passed. We currently have two full-time students as members- Seth Stratlin and Blayne McCafferty.

So, if you have college age kids or grandkids actively attending college, then encourage them to become members and The Tennessee T's will pay their dues. Maybe they will stay.

\*\*\*\*\*

**BOOGER.. IN THE PAN!**

Short Story. I found out my timing gear was not advanced as I thought it was, so a few weeks ago I preceded to remove the timing gear cover. Had to take the timing gear side cover off to be able to get behind the gear to slide it off the camshaft. This is what I found in the side cover living in my engine.



Use your ZOOM tool - view the snail

A snail.

Ricky Williams

\*\*\*\*\*

**NEWSLETTER SUBMISSIONS**

Announce future tours, tour and event pictures, tech articles, cars for sale, cars to buy, forgotten or incorrect birthday or anniversary listing. Without input, there will be no newsletter. email [tennesseets@hotmail.com](mailto:tennesseets@hotmail.com)  
\*Note\*: Please.... photos should include at least one Model T and/or one Tennessee T's member.

\*\*\*\*\*

**Find something in your old car that is not supposed to be there? Let us all see your find!**

Write a short article and tell our club members about what you found. Send pictures. [tennesseets@hotmail.com](mailto:tennesseets@hotmail.com)

## Tech Tip

by Bill Robinson

# Door Stop Bracket repair

If the threads that hold your Door Stop (footman loop) Bracket, or door strap bracket, are stripped and your strap is hanging similar to mine in the photo below, then there is a fairly simple fix, assuming you or your Model T buddy has a welder. A word of caution—be sure that your car does not have a gas leak before performing any welding on the body of your car. Better yet, remove the door.



1. My car only had one of the brass door strap adapters that were used by Ford, and the threads were stripped, so I used a drill bit and removed it (see photo). The other adapter was missing.



2. Using 1/2" x 1/8" x 1 1/2" steel strap, drill a hole approximately 3/8" from the end of the strap. The drill bit used should be a #21 (5/32" is close).



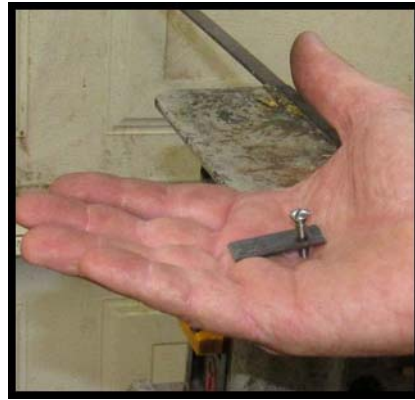
3. Tap the hole using a 10-32nf tap.



4. Once the hole is tapped, run a test screw in the newly threaded hole. The Ford book calls for a 10-32 slotted screw and the length should be at least 3/4" in order to reach the threaded hole, which will be recessed more than the standard brass adapter used by Ford.



5. This completes the fabrication of the new door strap adapter. If your application requires the use of two adapters, then fabricate another adapter by repeating steps 2 through 4.



6. Remove the upholstered door panel to expose the hole where the door strap screws are inserted.

7. Drill one  $\frac{1}{2}$ " hole approximately  $\frac{3}{4}$ " above the ORIGINAL hole. (see photo below)

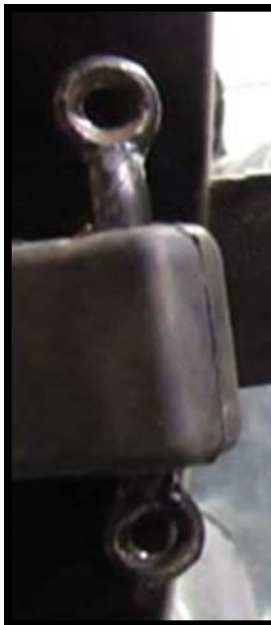
8. Drill one  $\frac{1}{2}$ " hole approximately  $\frac{3}{4}$ " below the ORIGINAL hole. (see photo below)

9. I was able to partially insert my screw into the new adapter, then holding the screw head, I inserted the adapter into the original adapter hole. Once in the hole, I was able to center the newly threaded hole in the original hole. The metal of the new adapter is now aligned with the freshly drilled hole and the threaded hole of the adapter is now centered in the original hole.

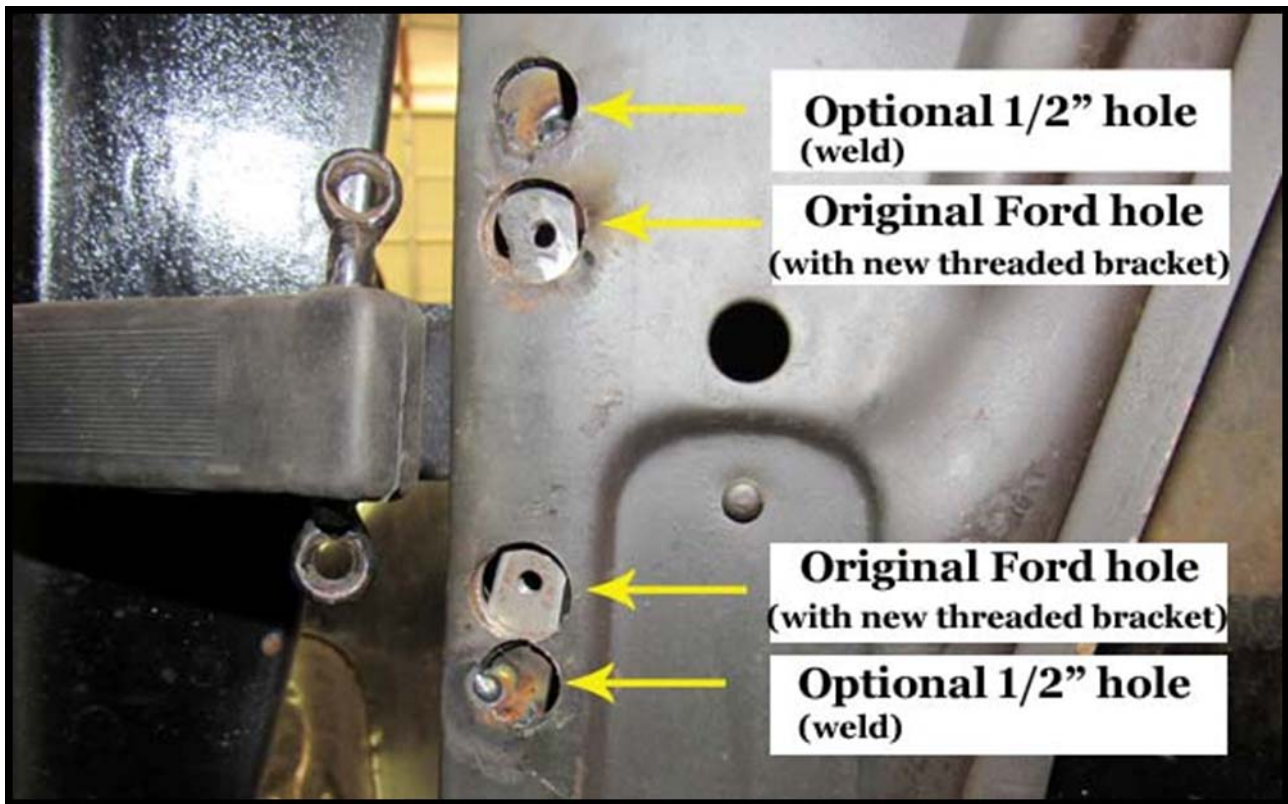
10. Repeat the above step if the second bracket is required.

11. Next, using your Door Stop Bracket, also known as a footman's loop, **be sure that the threads of the adapters align**, then clamp in place (I used vise grips at the bracket).

The Door Stop Bracket is pictured to the right







12. I used my Mig welder and lightly welded the adapter to the door at the new 1/2" hole that I drilled in steps 7 and 8.

13. After confirming that the welds and threads are good and properly aligned, the upholstered door panel is now ready for installation, then install the Door Stop Bracket and the strap.



**MEMBERSHIP APPLICATION**  
for  
**TENNESSEE T'S MODEL T FORD CLUB**

NAME \_\_\_\_\_ SPOUSE \_\_\_\_\_  
BIRTHDAY \_\_\_\_\_ BIRTHDAY \_\_\_\_\_  
ANNIVERSARY \_\_\_\_\_  
EMAIL \_\_\_\_\_ EMAIL \_\_\_\_\_  
CELL PHONE \_\_\_\_\_ CELL PHONE \_\_\_\_\_  
ADDRESS \_\_\_\_\_  
CITY \_\_\_\_\_ STATE \_\_\_\_\_ ZIP \_\_\_\_\_  
HOME PHONE \_\_\_\_\_

**ANNUAL MEMBERSHIP DUES:** \$15.00  
**DUE BY:** January 1 / each year  
**MAKE CHECK PAYABLE TO:** The Tennessee T's  
**MAIL TO:** Anita Owen  
1809 Oriole Drive  
Elizabethtown, KY 42701

You are cordially invited to join the Tennessee T's pursuant to the rules and by-laws governing the club and its membership. You must be a member in good standing of either the Model T Ford Club of America or the Model T Ford Club International. (WE ENCOURAGE MEMBERSHIP IN BOTH.) To participate in chapter events, your vehicle must meet chapter safety guidelines.

**MTFCI#** \_\_\_\_\_ **MTFCA#** \_\_\_\_\_

**List cars (body style and year)**

- |          |          |
|----------|----------|
| 1. _____ | 4. _____ |
| 2. _____ | 5. _____ |
| 3. _____ | 6. _____ |

\_\_\_\_\_  
**Signature**

\_\_\_\_\_  
**Date**

**TENNESSEE T'S MODEL T FORD CLUB  
MEMBERSHIP REQUIREMENT CAR SAFETY CHECK LIST  
For Participation in Club Tours**

- INSURANCE:** All members must have proof of current insurance.
- FIRE EXTINGUISHER:** A standard make portable Underwriters Laboratories approved B-C extinguisher must be carried in car. It must be readily available.
- BRAKES:** Brakes must bring the car to a full stop within 25 feet for each 10 miles per hour speed. Pedal pressure must feel solid. Brake pedal must be less than 2/3 of maximum travel.  
The hand brake travel must be less than 2/3 of maximum and the hand brake pawl must lock securely.  
Working brake lights are recommended.
- LIGHTS:** All electric lights must be operative.
- HORN:** All type horns or sounding devices must work.
- WINDSHIELD:** Safety glass is required in windshields and recommended for other flat glass windows.
- TIRES:** All tires must pass visual check for excessive tread wear and cracks.
- STEERING:** Steering mechanisms must be properly adjusted so movement of steering wheel exceeding 2 inches actually turns front wheels.
- RADIUS ROD:** Crankcase studs holding radius rod ball cap must be safety wired.
- WIRE WHEELS:** Must be in good condition with no broken or loose spokes.
- WOOD WHEELS:** Must be tight and crack free (spokes & felloes) with no loose wheel nuts or missing bolts.
- SUSPENSION:** No broken springs or excessive shackles wear.
- ENGINE:** No excessive fluid leaks – gas, oil or water.

**WAIVER/CERTIFICATION**

In consideration of being a member of the Tennessee T's Model T Ford Club, I certify that:

- I agree to maintain any vehicle I use for Club events according to the above standards.
- I certify my vehicle is properly titled and registered as required by the state of my residence.
- I certify that I have insurance coverage on my vehicle that covers my liability and physical damage as required in my state of residence.
- I release and hold harmless the Tennessee T's Model T Ford Club officers, directors and members and the Model T Ford Club International and/or Model T Ford Club of America from any liability of any kind whatsoever as a result of any personal injury or property damage sustained by the undersigned.

**OWNER** \_\_\_\_\_ **DATE** \_\_\_\_\_

**RECEIVED BY** \_\_\_\_\_ **DATE** \_\_\_\_\_