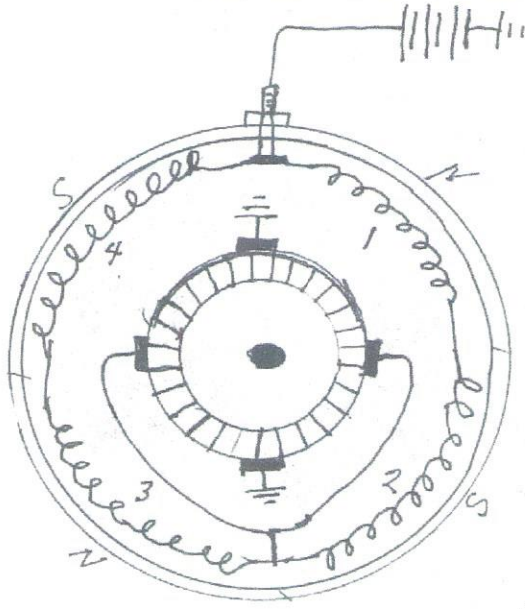


MODEL T GENERATOR MODIFICATION

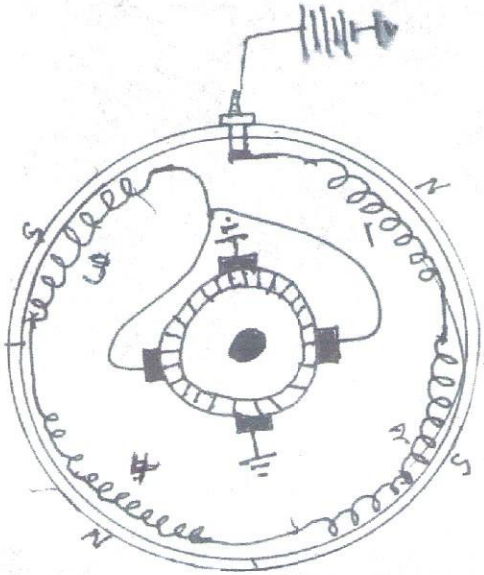
BY: LYNN COOK

Model T starter as made for use on a 6 volt battery:



Note: In the wiring schematic you have 2 parallel paths in both the field coils and the armature.

Model T starter as modified to use on a 12 Volt battery:



In the modified wiring the 4 field coils are in series. To keep your poles in North/South-North/South you have to swap coil 3 & 4 with each other. This wiring will drop the crank amps about 40 amps. This will result in less power from the battery and less from the starter. The result being a slightly weaker starter, about the same as if you were using an 8 volt battery on the starter like it was originally wired.

Benefits from the modification are: Less broken starter springs and torn up bendix.