

Tech Tip

by Bill Robinson

Door Stop Bracket repair

If the threads that hold your Door Stop (footman loop) Bracket, or door strap bracket, are stripped and your strap is hanging similar to mine in the photo below, then there is a fairly simple fix, assuming you or your Model T buddy has a welder. A word of caution—be sure that your car does not have a gas leak before performing any welding on the body of your car. Better yet, remove the door.



1. My car only had one of the brass door strap adapters that were used by Ford, and the threads were stripped, so I used a drill bit and removed it (see photo). The other adapter was missing.



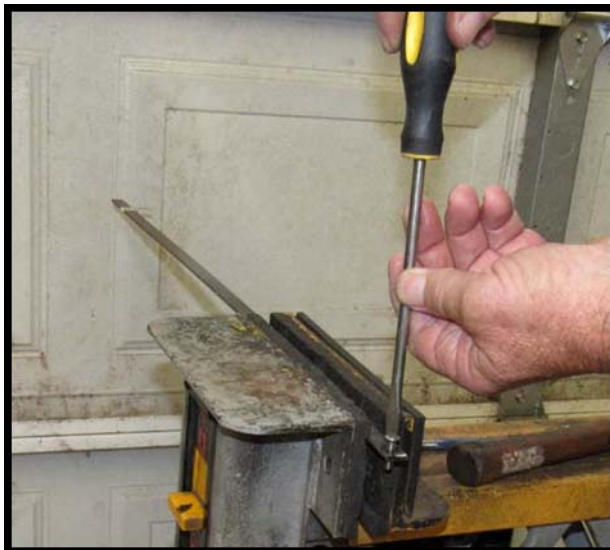
2. Using 1/2" x 1/8" x 1 1/2" steel strap, drill a hole approximately 3/8" from the end of the strap. The drill bit used should be a #21 (5/32" is close).



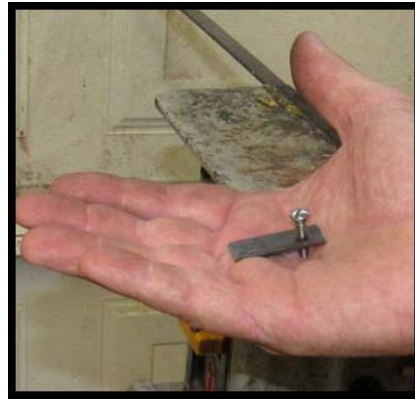
3. Tap the hole using a 10-32nf tap.



4. Once the hole is tapped, run a test screw in the newly threaded hole. The Ford book calls for a 10-32 slotted screw and the length should be at least 3/4" in order to reach the threaded hole, which will be recessed more than the standard brass adapter used by Ford.



5. This completes the fabrication of the new door strap adapter. If your application requires the use of two adapters, then fabricate another adapter by repeating steps 2 through 4.



6. Remove the upholstered door panel to expose the hole where the door strap screws are inserted.

7. Drill one $\frac{1}{2}$ " hole approximately $\frac{3}{4}$ " above the ORIGINAL hole. (see photo below)

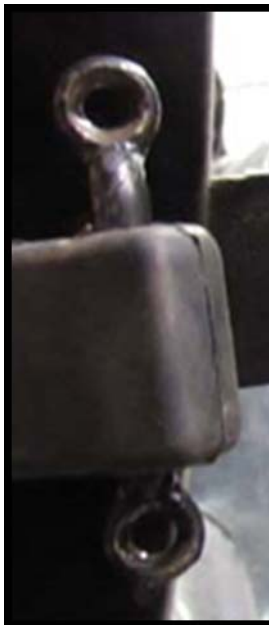
8. Drill one $\frac{1}{2}$ " hole approximately $\frac{3}{4}$ " below the ORIGINAL hole. (see photo below)

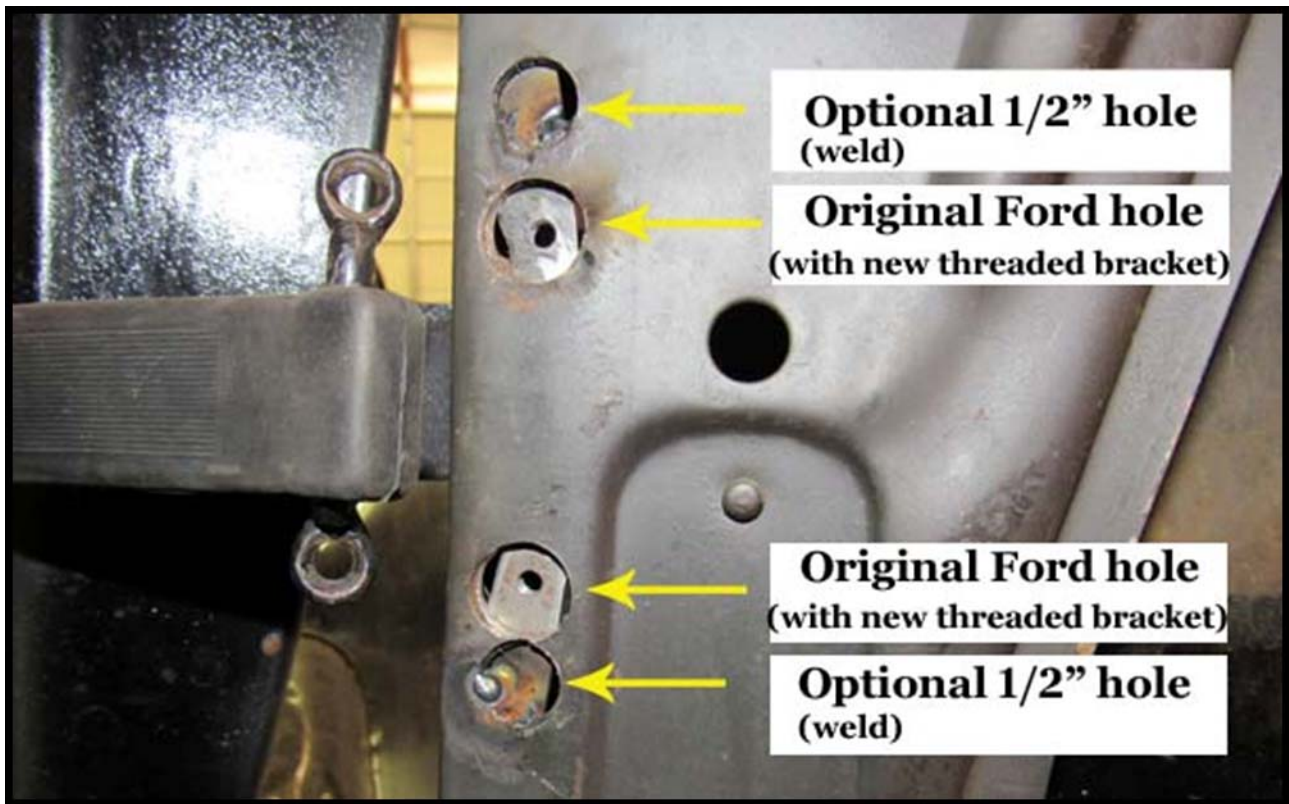
9. I was able to partially insert my screw into the new adapter, then holding the screw head, I inserted the adapter into the original adapter hole. Once in the hole, I was able to center the newly threaded hole in the original hole. The metal of the new adapter is now aligned with the freshly drilled hole and the threaded hole of the adapter is now centered in the original hole.

10. Repeat the above step if the second bracket is required.

11. Next, using your Door Stop Bracket, also known as a footman's loop, **be sure that the threads of the adapters align**, then clamp in place (I used vise grips at the bracket).

The Door Stop Bracket is pictured to the right





12. I used my Mig welder and lightly welded the adapter to the door at the new 1/2" hole that I drilled in steps 7 and 8.

13. After confirming that the welds and threads are good and properly aligned, the upholstered door panel is now ready for installation, then install the Door Stop Bracket and the strap.



1. My car only had one of the brass door strap adapters that were used by Ford, and the threads were stripped, so I used a drill bit and removed it (see photo). The other adapter was missing.
2. Using 1/2" x 1/8" x 1 1/2" steel strap material, drill a hole approximately 3/8" from the end of the strap. The drill bit used should be a #21 (5/32" is close).
3. Tap the hole using a 10-32nf tap.
4. Once the hole is tapped, run a test screw in the newly threaded hole. The Ford book calls for a 10-32 slotted screw and the length should be at least 3/4" in order to reach the threaded hole, which will be recessed more than the standard brass adapter used by Ford.
5. This completes the fabrication of the new door strap adapter. If your application requires the use of two adapters, then fabricate another adapter by repeating steps 2 through 4.
6. Remove the upholstered door panel to expose the holes where the door strap screws are inserted.
7. Drill one 1/2" hole approximately 3/4" above the upper hole.
8. Drill one 1/2" hole approximately 3/4" below the upper hole.
9. I was able to partially insert my screw into the new adapter, then holding the screw head, I inserted the adapter into the original adapter hole. Once in the hole, I was able to center the newly threaded hole in the original hole. The metal of the new adapter is now aligned with the freshly drilled hole and the threaded hole of the adapter is now centered in the original hole.
10. Repeat the above step if the second bracket is required.
11. Next, using your Door Stop Bracket, also known as a footman's loop, be sure that the threads of the adapters align, then clamp in place (I used vise grips at the bracket).
12. I used my mig welder and spot welded the adapter to the door at the new 1/2" hole that I drilled in steps 7 and 8.
13. After confirming that the welds and threads are good and properly aligned, the upholstered door panel is now ready for installation, then install the Door Stop Bracket and the strap.