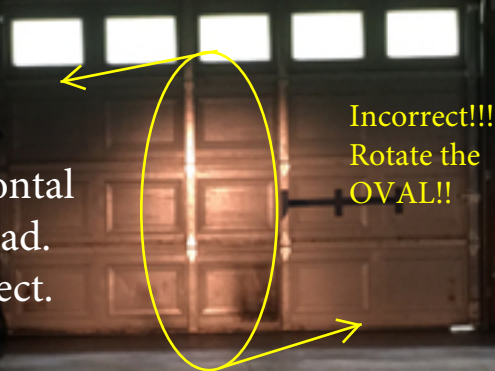


After the initial focusing of a Model T headlamp, is the pattern of the oval vertical rather than horizontal?  
Here's how to fix it.

The oval should be horizontal in order to light up the road.  
Rotate the oval to be correct.



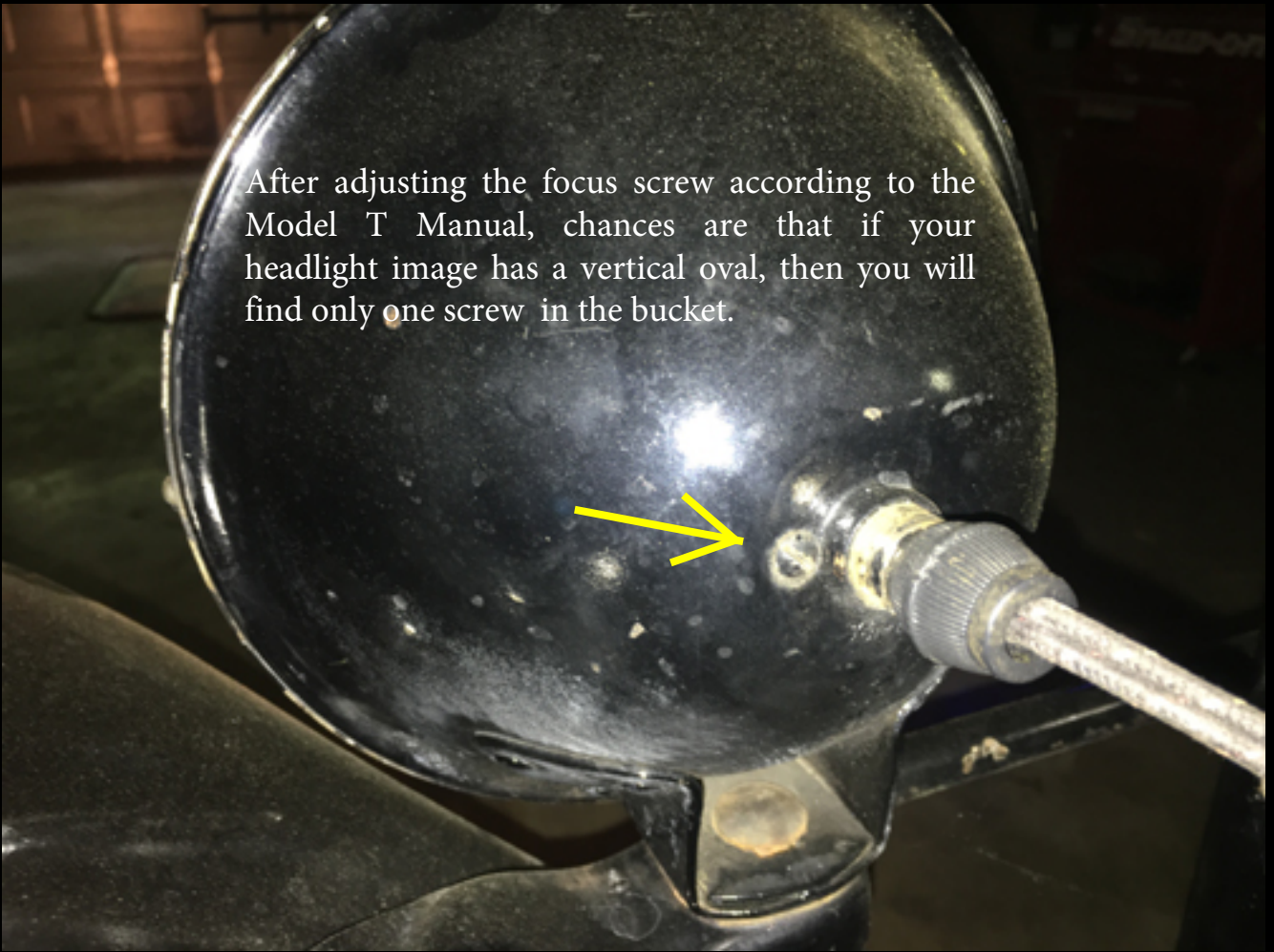
Incorrect!!!  
Rotate the  
OVAL!!

This image shows the focused oval situated vertically. This is not a good situation because it does not light up the road. Why did this situation occur? Because the vintage bulbs fit the lamp socket in such a way that the lit area aligned horizontally. Today's bulbs align the lit area vertically. The elements are made differently.

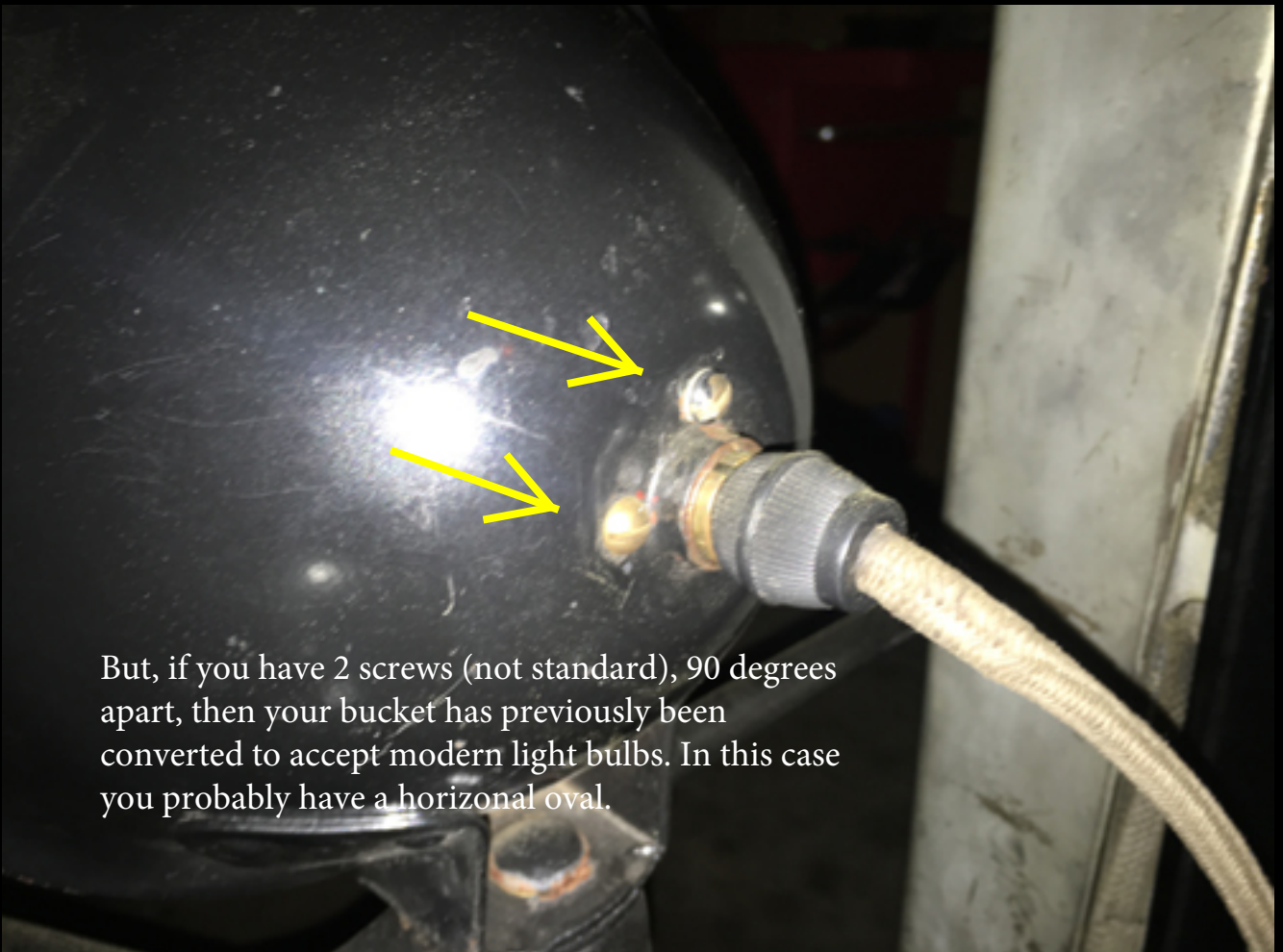
The fix is simple. Rotate the socket 90 degrees.

## The focal adjustment screw

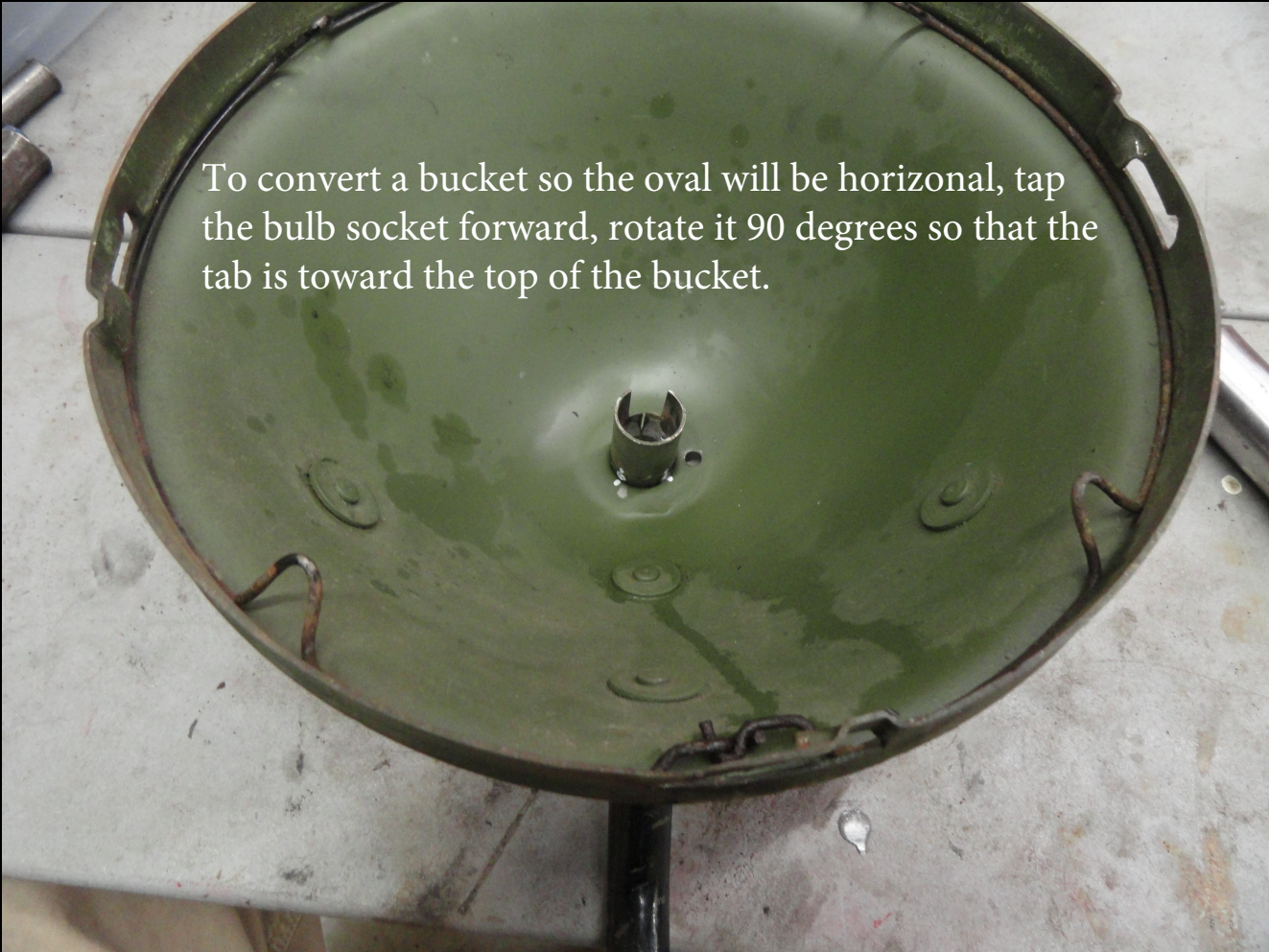
After adjusting the focus screw according to the Model T Manual, chances are that if your headlight image has a vertical oval, then you will find only one screw in the bucket.




But, if you have 2 screws (not standard), 90 degrees apart, then your bucket has previously been converted to accept modern light bulbs. In this case you probably have a horizontal oval.







To convert a bucket so the oval will be horizontal, tap the bulb socket forward, rotate it 90 degrees so that the tab is toward the top of the bucket.

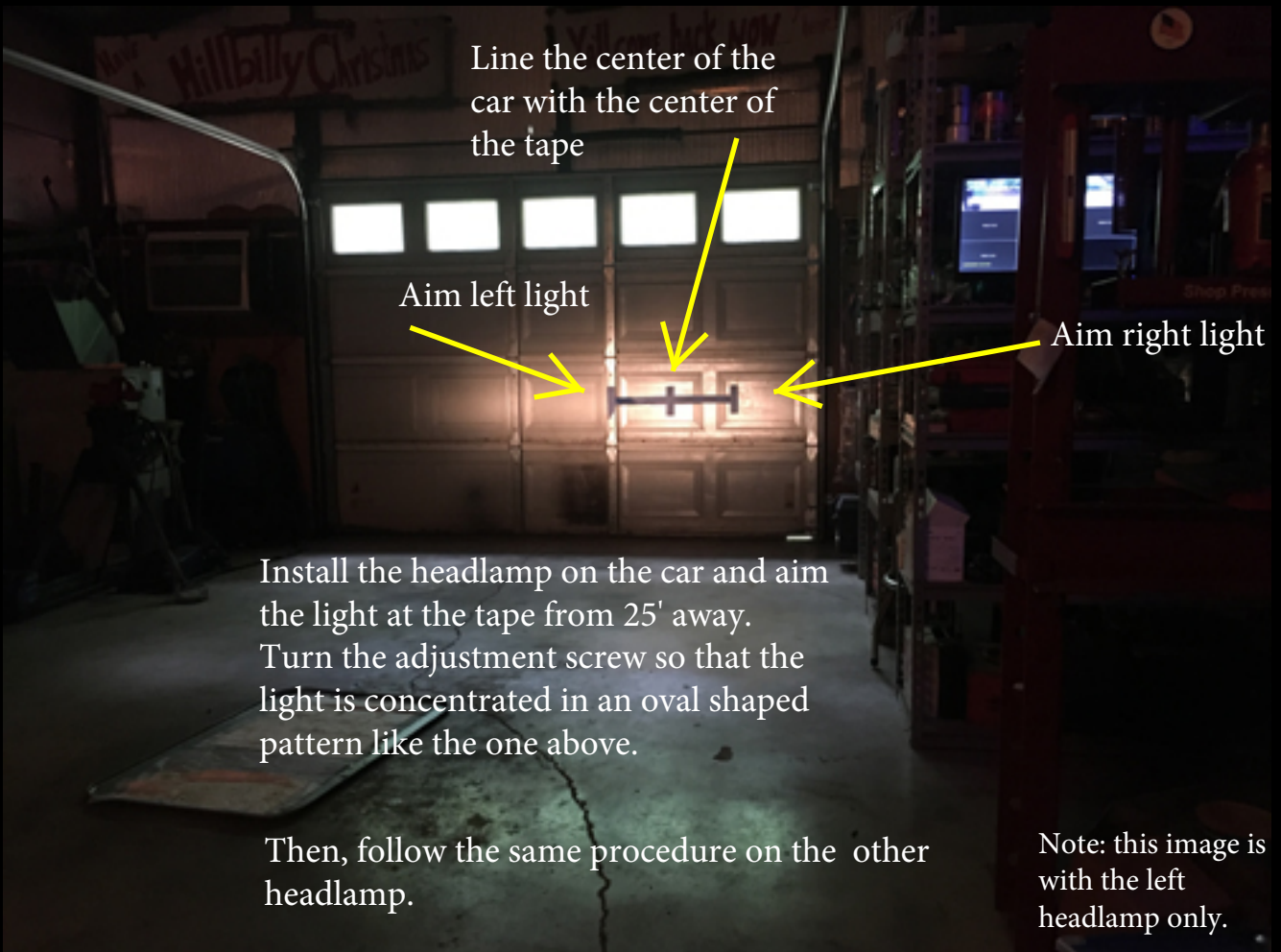


Then, gently tap the socket back in. There are 4 dimples in the bucket that will line up with the 4 holes in the socket. Make sure the dimples and holes align and fall into place.





Drill a hole in the bucket that will align with the threaded tab on the socket. Install the screw and the spring, from the outside, threaded into the tab. Install the cotter pin in the screw. Turn the screw to see if the socket moves in & out as designed. The empty hole can be filled with a short screw held in place with your favorite epoxy.



Install the headlamp on the car and aim the light at the tape from 25' away. Turn the adjustment screw so that the light is concentrated in an oval shaped pattern like the one above.

Then, follow the same procedure on the other headlamp.

Note: this image is with the left headlamp only.